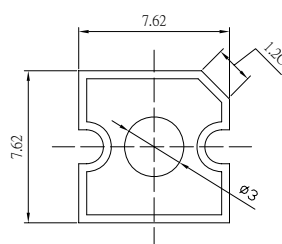


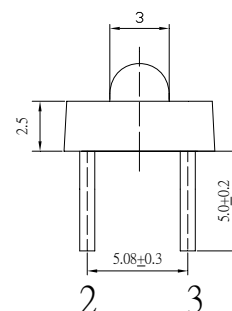
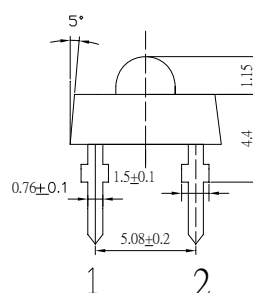
**■Features**

- High Luminous Super Flux Output
- 3  $\sigma$  Standard Directivity
- Long Lifetime Operation
- Low Thermal Resistance
- Superior Weather-Resistance
- UV Resistant Epoxy
- Water Clear Type

**■Applications**

- Interior and exterior automotive lighting (e.g. dashboard backlighting etc.)
- Backlighting (Illuminated advertising, general lighting, etc)
- Decorative Lighting
- Other Lighting

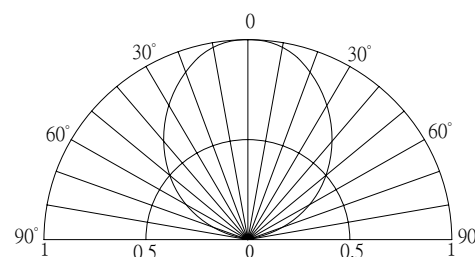
**■Outline Dimension**

 Unit:mm  
 Tolerance: $\pm 0.3$ mm

 1,4 Anode  
 2,3 Cathode

**■Absolute Maximum Rating**

(Ta=25°C)

Item	Symbol	Value	Unit
DC Forward Current	$I_F$	50	mA
Pulse Forward Current*	$I_{FP}$	100	mA
Reverse Voltage	$V_R$	5	V
Power Dissipation	$P_D$	180	mW
Operating Temperature	Topr	-30 ~ +85	°C
Storage Temperature	Tstg	-40 ~ +100	°C
Lead Soldering Temperature	Tsol	260 °C / 5sec	-

\*Pulse width Max.10ms , Duty ratio max 1/10

**■Directivity**

**■Electrical -Optical Characteristics**

(Ta=25°C)

Item	Symbol	Condition	Min.	Typ.	Max.	Unit
DC Forward Voltage	$V_F$	$I_F=30$ mA	2.9	3.1	3.6	V
DC Reverse Current	$I_R$	$V_R=5$ V	-	-	10	$\mu$ A
Luminous Intensity*	$I_v$	$I_F=30$ mA	500	600	-	mcd
Chromaticity Coordinates*	x	$I_F=30$ mA	-	0.45	-	
	y	$I_F=30$ mA	-	0.17	-	
50% Power Angle	$2\theta_{1/2}$	$I_F=30$ mA	-	100	-	deg

 \*1 Tolerance of chromaticity coordinate is  $\pm 10\%$ 

 \*2 Tolerance of luminous intensity is  $\pm 15\%$